



Hammer Unions



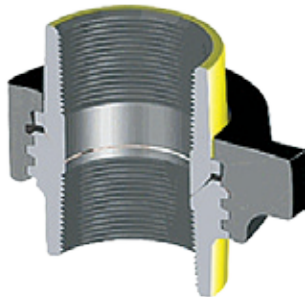
C&C Hammer Unions

Figure 100	3
Figure 110	4
Figure 200	5
Figure 201	6
Figure 206	7
Figure 26H	8
Figure 207	9
Figure 211	9
Figure 300	10
Figure 301	11
Figure 400	12
Figure 402	13
Figure CGC	13
Figure 602	14
Figure 1002	15
Figure 1003	16
Figure 1502	17
Figure OCT	18
Hammer Union Accessories	18
Warnings and Cautions	19



Figure 100

C&C's Figure 100 is an economical union with precision machined metal-to-metal sealing surfaces. Recommended for water, oil or gas up to 1,000 PSI NSCWP.



Standard Service		H2S Service	
NSCWP	Test	NSCWP	Test
1,000 PSI	1,500 PSI	1,000 PSI	1,500 PSI

*All Working Pressures are Non-shock Cold Working Pressure Ratings (NSCWP)

Figure 100 Threaded
Color Code: Yellow Subs/Black Nut

Nominal Pipe Size	2"	2 1/2"	3"	4"	5"	6"	8"
Qty. / Box Part No.	16 U010200	8 U012500	6 U010300	4 U010400	2 U010500	1 U010600	1 U010800
Clearance Radius (A)	2.91"	3.66"	4.00"	4.69"	5.20"	6.97"	7.67"
End to End Threaded (B)	3.63"	4.38"	5.07"	6.24"	6.58"	7.10"	8.60"
Weight (lbs)	6.10	10.75	14.50	22.40	31.00	47.00	60.00
Material, Sub Material, Nut	A105 A105	A105 A395 D.I.	A105 A105	A395 D.I. A395 D.I.	A395 D.I. A395 D.I.	A395 D.I. A395 D.I.	A395 D.I. A395 D.I.

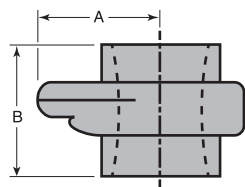


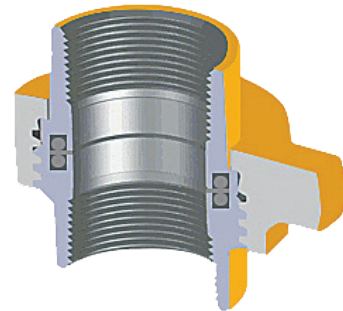
Figure 100 Butt Weld Schedule 80*
Color Code: Yellow Subs/Black Nut

Nominal Pipe Size	2"	3"	4"	6"	8"
Qty. / Box Part No.	16 U010220	6 U010320	4 U010420	1 U010620	1 U010820
Clearance Radius (A)	2.91"	4.00"	4.69"	6.97"	7.67"
End to End (B)	3.79"	4.80"	4.98"	7.56"	7.31"
Weight (lbs)	6.63	16.00	23.50	54.00	80.00
Material, Sub Material, Nut	A105 A105	A105 A105	A105 A395 D.I.	A105 A105	A105 A395 D.I.

*Schedule 40 available upon request
Availability in Socket Weld varies per size



Figure 110–Insulated Union



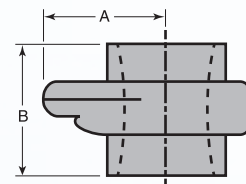
C&C's Figure 110 is recommended for use in piping systems where isolation of electrical current may be required, such as when cathodic protection is applied to a piping system in order to mitigate corrosion. The metallic components are separated by two insulating rings, one of which also functions as a sealing member. Materials used for insulating the connection and the double O-Ring arrangement used for sealing are constructed of high quality materials that are resistant to most of the process fluids and chemicals that are routinely encountered during oil and gas production.

Standard Service		H2S Service	
NSCWP	Test	NSCWP	Test
2,500 PSI	3,750 PSI	2,500 PSI	3,750 PSI
4,000 PSI	6,000 PSI	4,000 PSI	3,750 PSI

*All Working Pressures are Non-shock Cold Working Pressure Ratings (NSCWP)

Threaded Ends — 2,500 PSI NSCWP Color Code: Orange Subs /Orange Nut

Nominal Pipe Size	2"
Qty. / Box Part No.	12 UY11200B100
Clearance Radius (A)	3.16"
End to End Threaded (B)	3.70"
Weight (lbs)	6.79
Material, Sub Material, Nut	A105 A105

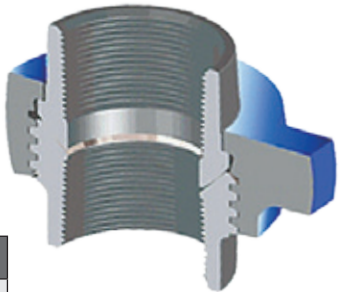


Threaded Ends — 4,000 PSI NSCWP Color Code: Brown Subs/Brown Nut

Nominal Pipe Size	2"	3"
Qty. / Box Part No.	6 UY11200D100	3 UY11300D100
Clearance Radius (A)	3.94"	4.58"
End to End Threaded (B)	5.67"	6.89"
Weight (lbs)	13.47	25.66
Material, Sub Material, Nut	A105 A105	A105 A105



Figure 200



C&C's Figure 200 is a union of great utility. It meets most requirements in the medium pressure ranges. Precision seating surfaces assure dependable pressure seal. Like parts in each size are interchangeable with other manufacturers' unions. Recommended for water, oil or gas service up to 2,000 PSI NSCWP.

Standard Service		H2S Service	
NSCWP	Test	NSCWP	Test
2,000 PSI	3,000 PSI	2,000 PSI	3,000 PSI

*All Working Pressures are Non-shock Cold Working Pressure Ratings (NSCWP)

Figure 200 Threaded Color Code: Gray Subs/Blue Nut

Nominal Pipe Size	1"	1 1/4"	1 1/2"	2"	2 1/2"	3"	4"	6"	8"	10"
Qty. / Box Part No.	40 U020100	30 U021200	30 U021500	16 U020200	8 U022500	6 U020300	4 U020400	1 U020600	1 U020800	1 U021000
Clearance Radius (A)	1.87"	2.50"	2.50"	2.91"	3.66"	3.96"	4.53"	6.125"	7.70"	8.98"
End to End Threaded (B)	2.65"	2.78"	2.85"	3.57"	4.31"	4.57"	5.04"	6.75"	7.31"	9.11"
Weight (lbs)	2.05	3.20	3.27	6.13	10.88	14.66	20.00	47.00	68.00	100.00
Material, Sub Material, Nut	A105 A105	A105 A395 D.I.	A105 A395 D.I.	A105 A105	A105 A395 D.I.	A105 A105	A105 A105	A105 A105	A105 A216 WCB	A216 WCB A216 WCB

Figure 200 Butt Weld Schedule 40 and 80 Color Code: Gray Subs/Blue Nut

Nominal Pipe Size	2"	3"	4"	6"	8"	10"
Qty. / Box Part No.	16 *	6 *	4 *	1 *	1 *	1 *
Clearance Radius (A)	2.91"	3.96"	4.53"	6.125"	7.70"	8.98"
End to End (B)	3.79"	4.50"	5.03"	6.75"	7.31"	9.25"
Weight (lbs)	6.63	15.67	22.00	52.00	78.00	108.00
Material, Sub Material, Nut	A105 A105	A105 A105	A105 A105	A105 A105	A105 A216 WCB	A216 WCB A216 WCB

*Part numbers vary per weld type and schedule
Also available in Socket Weld

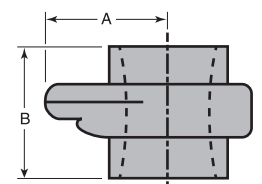
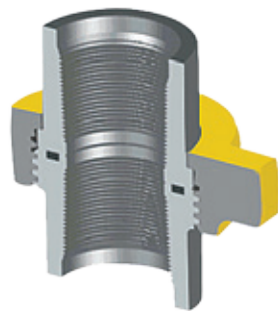


Figure 201–8RND EUE Union



C&C's Figure 201 has EUE 8 Round Tubing Threads. This union is a Flat-Face type union that utilizes an O-Ring seal. The Figure 201 is available in 2 3/8" EUE and 2 7/8" EUE. Like parts in each size are interchangeable with other manufacturers' unions. Recommended for water, oil or gas service to 3,000 PSI NSCWP.

Standard Service		H2S Service	
NSCWP	Test	NSCWP	Test
3,000 PSI	4,000 PSI	3,000 PSI	4,000 PSI

*All Working Pressures are Non-shock Cold Working Pressure Ratings (NSCWP)

Figure 201 Threaded

Nominal Pipe Size	2" (2 3/8")	2 1/2" (2 7/8")
Qty. / Box Part No.	6 U210250	4 U212550
Clearance Radius (A)	3.625"	4.00"
End to End Threaded (B)	5.50"	6.00"
Weight (lbs)	14.34	20.50
Material, Sub	A105	A105
Material, Cap	A105	A105

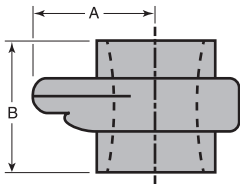
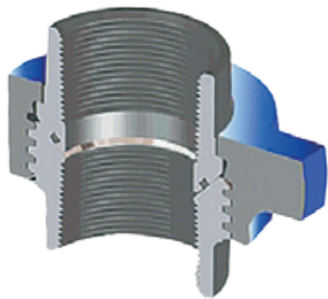


Figure 206



C&C's Figure 206 has an O-Ring Seal added to the Male Sub, which functions as a secondary seal. Subs and Nuts of the Figure 206 union are interchangeable with the Figure 200 and other manufacturers' parts. Recommended for water, oil or gas service up to 2,000 PSI NSCWP.

Standard Service		H2S Service	
NSCWP	Test	NSCWP	Test
2,000 PSI	3,000 PSI	2,000 PSI	3,000 PSI

*All Working Pressures are Non-shock Cold Working Pressure Ratings (NSCWP)
Viton® O-Rings required for H2S Service and are available upon request

Figure 206 Threaded
Color Code: Gray Subs/Blue Nut

Nominal Pipe Size	1"	1 1/4"	1 1/2"	2"	2 1/2"	3"	4"	6"	8"	10"
Qty. / Box Part No.	40 U260100	30 U261200	30 U260500	16 U260200	8 U262500	6 U260300	4 U260400	1 U260600	1 U260800	1 U261000
Clearance Radius (A)	1.87"	2.50"	3.00"	2.91"	3.66"	3.96"	4.53"	6.125"	7.70"	8.98"
End to End Threaded (B)	2.65"	2.78"	4.875"	3.94"	4.31"	4.50"	5.08"	6.75"	7.31"	9.11"
Weight (lbs)	2.05	3.20	3.27	6.13	10.88	14.66	20.00	47.00	68.00	100.00
Material, Sub	A105	A105	A105	A105	A105	A105	A105	A105	A105	A216 WCB
Material, Nut	A105	A395 D.I.	A395 D.I.	A105	A395 D.I.	A105	A105	A105	A216 WCB	A216 WCB

Figure 206 Butt Weld Schedule 40 and 80
Color Code: Gray Subs/Blue Nut

Nominal Pipe Size	2"	3"	4"	6"	8"	10"
Qty. / Box Part No.	16 *	6 *	4 *	1 *	1 *	1 *
Clearance Radius (A)	2.91"	3.96"	4.53"	6.125"	7.70"	8.98"
End to End (B)	3.81"	4.57"	5.03"	6.75"	7.31"	9.25"
Weight (lbs)	6.63	15.67	22.00	52.00	78.00	108.00
Material, Sub	A105	A105	A105	A105	A105	A216 WCB
Material, Nut	A105	A105	A105	A105	A216 WCB	A216 WCB

*Part numbers vary per butt weld schedule
Also available in Socket Weld

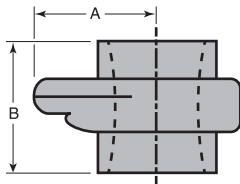


Figure 26H–Frac Hose Fitting



C&C's Figure 26H Frac Hose Fitting is constructed of high quality cast ductile iron. This union is also referred to as a Hose Barb Union. It features a union end connection that is interchangeable with a figure 200/206 connection, and it comes with an integral hose shank on both the male and female sub. The figure 26H union is designed to save time and money by eliminating the need to weld a hose nipple onto a figure 200/206 hammer union. This union is uniquely designed to be tested to twice the rated working pressure, which is often a requirement for hoses used in oilfield applications.

Standard Service		H2S Service	
NSCWP	Test	NSCWP	Test
400 PSI	800 PSI	400 PSI	800 PSI

*All Working Pressures are Non-shock Cold Working Pressure Ratings (NSCWP)

Figure 26H – Frac Hose Fitting
Ends/Blue Nut/Electro Zinc Plate Subs

Nominal Pipe Size	4"
Qty. / Box Part No.	3 U26H400
Clearance Radius (A)	4.53"
End to End Threaded (B)	16.47"
Weight (lbs)	30
Material, Sub Material, Nut	A105 A105

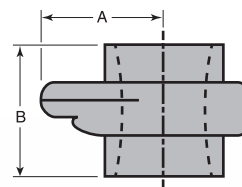
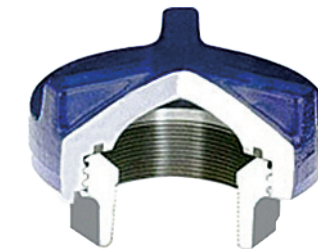


Figure 207–Blanking Union



C&C's blanking cap with a Buna-N O-Ring seal provides an efficient and dependable closure. The threaded sub is interchangeable with Figure 200 threaded sub and other manufacturers' parts. Recommended for water, oil, or gas service up to 2,000 PSI NSCWP.

Standard Service		H2S Service	
NSCWP	Test	NSCWP	Test
2,000 PSI	3,000 PSI	2,000 PSI	3,000 PSI

*All Working Pressures are Non-shock Cold Working Pressure Ratings (NSCWP)

Figure 207 Threaded
Color Code: Gray Subs/Blue Cap

Nominal Pipe Size	3"	4"
Qty. / Box Part No.	6 U270300	4 U270400
Clearance Radius (A)	2.88"	3.59"
End to End Threaded (B)	3.75"	4.31"
Weight (lbs)	10.60	18.75
Material, Sub Material, Cap	A105 A105	A105 A395 D.I.

Figure 207 Butt Weld Schedule 40 and 80
Color Code: Gray Subs/Blue Cap

Nominal Pipe Size	3"	4"
Qty. / Box Part No.	6 U270320	4 U270420
Clearance Radius (A)	2.88"	3.59"
End to End (B)	3.75"	4.31"
Weight (lbs)	11.60	18.75
Material, Sub Material, Nut	A105 A105	A105 A395 D.I.

*Part numbers vary per butt weld schedule

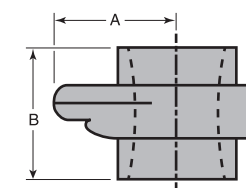
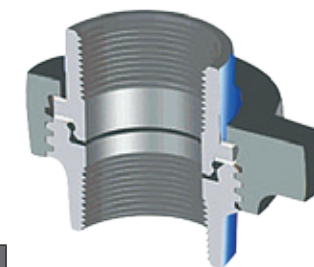


Figure 211–Insulating Union



C&C's Figure 211 (Insulating Union) is constructed of forged carbon steel. This union has insulating seals and flange rings. Recommended for 2,000 PSI systems where isolation of electrical current may be required, such as when cathodic protection is applied to a piping system in order to mitigate corrosion.

Standard Service		H2S Service	
NSCWP	Test	NSCWP	Test
2,000 PSI	3,000 PSI	2,000 PSI	3,000 PSI

*All Working Pressures are Non-shock Cold Working Pressure Ratings (NSCWP)

Figure 211 Threaded
Color Code: Blue Subs/Gray Nut

Nominal Pipe Size	2"	3"
Qty. / Box Part No.	16 U110200	6 U110300
Clearance Radius (A)	2.91"	3.96"
End to End Threaded (B)	3.47"	4.47"
Weight (lbs)	6.88	14.00
Material, Sub Material, Nut	A105 A105	A105 A105

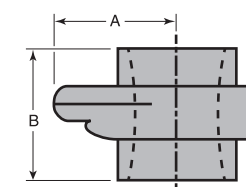
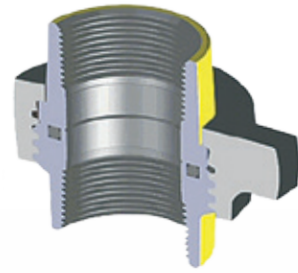


Figure 300—Flat Face Union



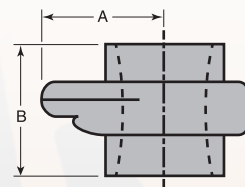
C&C's Figure 300 is manufactured from carbon steel. This Flat-Face type union has an O-Ring seal. Recommended for use where straight breakout of pipe segments is required. Suitable for water, oil, or gas service at pressures up to 12,500 PSI NSCWP. Please note that colors vary per pressure rating.

Standard Service		H2S Service	
NSCWP	Test	NSCWP	Test
2,000 PSI	3,000 PSI	2,000 PSI	3,000 PSI
2,500 PSI	3,750 PSI	2,500 PSI	3,750 PSI
12,500 PSI	18,750 PSI	N/A	N/A

*All Working Pressures are Non-shock Cold Working Pressure Ratings (NSCWP)

Thread Ends - 2,000 PSI NSCWP Color Code: Yellow Subs/ Black Nut

Nominal Pipe Size	2"
Qty. / Box Part No.	16 U030200
Clearance Radius (A)	2.91"
End to End Threaded (B)	3.76"
Weight (lbs)	6.50
Material, Sub Material, Nut	A105* A105



*Also available with 316SS Subs

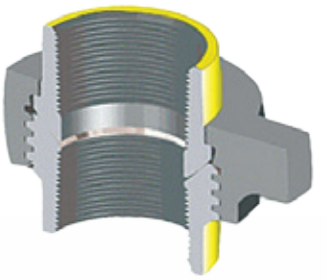
Thread Ends - 2,500 PSI NSCWP Color Code: Light Gray Subs/ Green Nut

Nominal Pipe Size	1"
Qty. / Box Part No.	32 UY30100C100
Clearance Radius (A)	2.33"
End to End Threaded (B)	3.20"
Weight (lbs)	2.79
Material, Sub Material, Nut	A105 A105

Thread Ends - 12,500 PSI NSCWP Color Code: Zn-plated Subs/ Zn-plated Nut

Nominal Pipe Size	1/2"	3/4"	1"
Qty. / Box Part No.	40 UY30050G100	40 UY30075G100	16 UY30100G100
Clearance Radius (A)	1.80"	1.80"	2.52"
End to End Threaded (B)	2.96"	3.08"	3.53"
Weight (lbs)	2.05	2.09	4.36
Material, Sub Material, Nut	SAE 4130 SAE 4140	SAE 4130 SAE 4140	SAE 4130 SAE 4140

Figure 301



C&C's unique Figure 301 is a union of great utility. It meets most requirements in the medium pressure ranges. Precision seating surfaces assure dependable pressure seal. Recommended for water, oil or gas service up to 3,000 PSI NSCWP.

Standard Service		H2S Service	
NSCWP	Test	NSCWP	Test
3,000 PSI	4,500 PSI	3,000 PSI NSCWP	4,500 PSI

*All Working Pressures are Non-shock Cold Working Pressure Ratings (NSCWP)

Figure 301 Threaded Color Code: Yellow Subs/Gray Nut

Nominal Pipe Size	2"
Qty. / Box Part No.	16 U210200
Clearance Radius (A)	2.91"
End to End Threaded (B)	3.75"
Weight (lbs)	6.13
Material, Sub Material, Nut	A105 A105

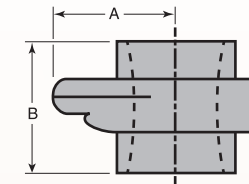
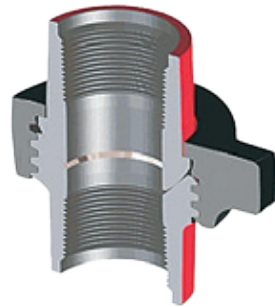


Figure 301 Socket Weld Color Code: Yellow Subs/Gray Nut

Nominal Pipe Size	2"
Qty. / Box Part No.	16 U210200-SW
Clearance Radius (A)	N/A
End to End Threaded (B)	3.75"
Weight (lbs)	6.13
Material, Sub Material, Nut	A105 A105



Figure 400



C&C's Figure 400 features a precision ball and cone sealing surface for sure metal-to-metal seal. Recommended for water, oil and gas service to 4,000 PSI NSCWP.

Standard Service		H2S Service	
NSCWP	Test	NSCWP	Test
4,000 PSI	6,000 PSI	4,000 PSI	6,000 PSI

*All Working Pressures are Non-shock Cold Working Pressure Ratings (NSCWP)

Figure 400 Threaded
Color Code: Red Subs/Black Nut

Nominal Pipe Size	2"	3"	4"	12"
Qty. / Box	6	4	3	1
Part No.	U040200	U040300	U040400	U041200
Clearance Radius (A)	3.35"	4.125"	5.00"	10.39"
End to End Threaded (B)	5.39"	6.125"	8.125"	10.98"
Weight (lbs)	11.50	21.00	32.00	160.00
Material, Sub	A105	A105	A105	A105
Material, Nut	1045	A105	A105	A105

Figure 400 Butt Weld Schedule 80
Color Code: Red Subs/Black Nut

Nominal Pipe Size	12"
Qty. / Box	1
Part No.	U041220
Clearance Radius (A)	10.39"
End to End (B)	10.98"
Weight (lbs)	188.00
Material, Sub	A105
Material, Nut	A105

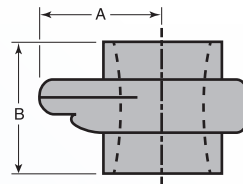
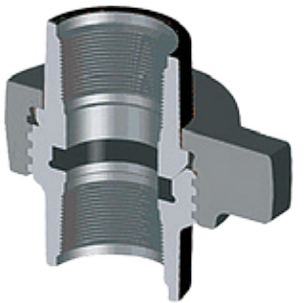


Figure 402



C&C's Figure 402 has a resilient lip-type seal plus precision metal-to-metal seals. Recommended for water, oil or gas service to 4,000 PSI NSCWP.

Standard Service		H2S Service	
NSCWP	Test	NSCWP	Test
4,000 PSI	6,000 PSI	4,000 PSI	6,000 PSI

*All Working Pressures are Non-shock Cold Working Pressure Ratings (NSCWP)

Figure 402 Threaded
Color Code: Black Subs/Black Nut

Nominal Pipe Size	2"
Qty. / Box	6
Part No.	U420200
Clearance Radius (A)	3.56"
End to End Threaded (B)	5.25"
Weight (lbs)	11.34
Material, Sub	A105
Material, Nut	1045

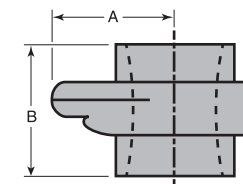
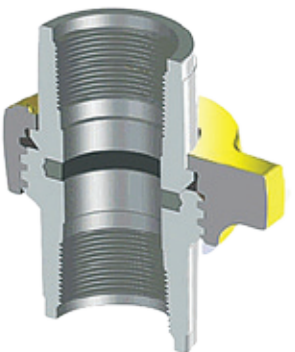


Figure CGC



C&C's Figure CGC is made with NPT Ends, and manufactured from forged Low Alloy Steel. This union has a "vee lip" type Seal Rings, and is commonly used in hot oil applications. Recommended for water, oil, or gas up to 6000 PSI NSCWP. Interchangeable with other manufacturers.

Standard Service		H2S Service	
NSCWP	Test	NSCWP	Test
6,000 PSI	9,000 PSI	6,000 PSI	9,000 PSI

*All Working Pressures are Non-shock Cold Working Pressure Ratings (NSCWP)

Figure CGC Threaded
Color Code: Silver Subs/Yellow Nut

Nominal Pipe Size	1 1/2"	2"
Qty. / Box	12	6
Part No.	UC61500	UC60200
Clearance Radius (A)	2.83"	3.27"
End to End Threaded (B)	4.12"	5.78"
Weight (lbs)	7.50	12.67
Material, Sub	4130 AS	4130 AS
Material, Nut	4140 AS	4140 AS

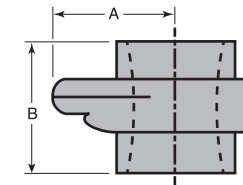
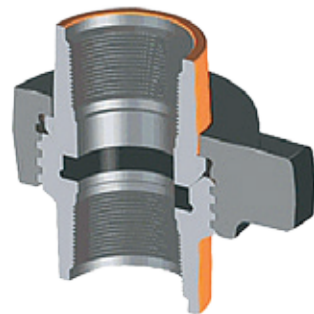


Figure 602



C&C's Figure 602 has a replaceable lip-type seal ring of Buna-N specifically designed to minimize fluid flow turbulence. The replaceable lip-type ring also provides a pressure seal and protection for the metal-to-metal seating surfaces. These unions are recommended for manifold and truck mounting where size and weight are critical. Recommended for air, water, oil, gas or mud service up to 6,000 PSI NSCWP.

Standard Service		H2S Service	
NSCWP	Test	NSCWP	Test
6,000 PSI	9,000 PSI	6,000 PSI	9,000 PSI

*All Working Pressures are Non-shock Cold Working Pressure Ratings (NSCWP)

Figure 602 Threaded
Color Code: Orange Subs/Black Nut

Nominal Pipe Size	1"	1 1/2"	2"	3"	4"
Qty. / Box Part No.	32 U620100	10 U621500	6 U620200	3 U620300	2 U620400
Clearance Radius (A)	2.15"	3.00"	3.60"	4.50"	4.875"
End to End Threaded (B)	3.55"	4.875"	5.30"	6.25"	8.125"
Weight (lbs)	3.88	10.75	15.00	26.67	37.00
Material, Sub Material, Nut	4130 AS 4140 AS	4140 AS 4140 AS	4130 AS 4140 AS	4130 AS 4140 AS	4130 AS 4140 AS

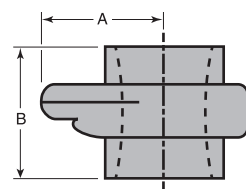


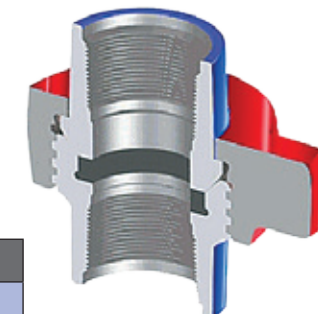
Figure 602 Butt Weld Schedule 80, 160 and XXH
Color Code: Orange Subs/Black Nut

Nominal Pipe Size	2"	3"	4"
Qty. / Box Part No.	6 *	4 *	2 *
Clearance Radius (A)	3.60"	4.50"	4.875"
End to End (B)	5.09"	5.375"	5.625"
Weight (lbs)	17.00	28.00	36.00
Material, Sub Material, Nut	4130 AS 4140 AS	4130 AS 4140 AS	4130 AS 4140 AS

*Part numbers vary per butt weld schedule



Figure 1002



C&C's Figure 1002 has a replaceable lip-type seal ring of Buna-N specifically designed to minimize fluid flow turbulence. The lip-type ring works similarly to the Figure 602 Union. These unions are for use on high pressure systems and trucks. Recommended for air, water, oil, gas and mud service up to 10,000 PSI NSCWP.

Standard Service		H2S Service	
NSCWP	Test	NSCWP	Test
10,000 PSI	15,000 PSI	7,500 PSI	12,000 PSI

*All Working Pressures are Non-shock Cold Working Pressure Ratings (NSCWP)

Figure 1002 Threaded
Color Code: Blue Subs/Red Nut

Nominal Pipe Size	1"	2"	3"	4"	5"
Qty. / Box Part No.	32 U120100	6 U120200	3 U120300	2 U120400	1 U120500
Clearance Radius (A)	2.15"	3.60"	4.50"	4.875"	6.00"
End to End Threaded (B)	3.55"	5.30"	6.25"	8.125"	10.375"
Weight (lbs)	3.94	15.00	26.67	38.00	82.00
Material, Sub Material, Nut	4130 AS 4140 AS	4130 AS 4140 AS	4130 AS 4140 AS	4130 AS 4140 AS	4130 AS 4140 AS

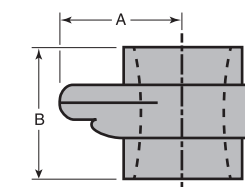


Figure 1002 Butt Weld Schedule 160 and XXH
Color Code: Blue Subs/Red Nut

Nominal Pipe Size	2"	3"	4"	5"	6"
Qty. / Box Part No.	6 U120240	3 U120340	2 U120440	1 U120540	1 U120640
Clearance Radius (A)	3.60"	4.50"	4.875"	6.00"	6.81"
End to End (B)	5.18"	5.375"	5.625"	6.125"	6.73"
Weight (lbs)	17.00	28.00	35.00	66.00	88.00
Material, Sub Material, Nut	4130 AS 4140 AS	4130 AS 4140 AS	4130 AS 4140 AS	4130 AS 4140 AS	4130 AS 4140 AS

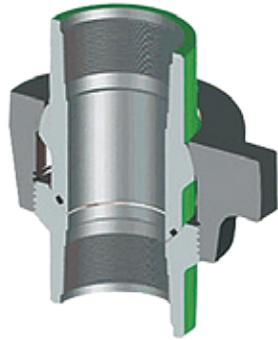
Schedule 160 available upon request

Figure 1002 Combination Ends
Color Code: Blue Subs/Red Nut

Nominal Pipe Size	5" × 4" 4" NPT BOTH ENDS	4" × 5" 4" MALE SE × 5" FEMALE BW	5" × 4" 5" MALE BW × 4" FEMALE SE
Qty. / Box Part No.	1 U125400	1 U124540	1 U125440
Weight (lbs)	71.00	71.00	71.00
Material, Sub Material, Nut	4130 AS 4140 AS	4130 AS 4140 AS	4130 AS 4140 AS

*5" 1002 utilizes an O-Ring

Figure 1003– Misaligning Union



C&C's Figure 1003 (Mis-aligning Union) has NPT or Butt Weld Ends. It is constructed of Forged Alloy Steel, and comes with a Buna N O-Ring. Recommended for high pressure water, oil, mud or gas service where alignment of piping is a problem, with up to 7 1/2° angular adjustment from center (15° total).

Standard Service		H2S Service	
NSCWP	Test	NSCWP	Test
10,000/7,500 PSI	15,000/11,250 PSI	5,000 PSI	7,500 PSI

*All Working Pressures are Non-shock Cold Working Pressure Ratings (NSCWP)
3" rated at 10,000 PSI NSCWP; 4" and larger rated at 7,500 PSI NSCWP

Figure 1003 Threaded
Color Code: Green Subs/Black Nut

Nominal Pipe Size	4"
Qty. / Box	1
Part No.	U130400
Clearance Radius (A)	5.75"
End to End Threaded (B)	10.94"
Weight (lbs)	84.00
Material, Sub	4130 AS
Material, Nut	4140 AS

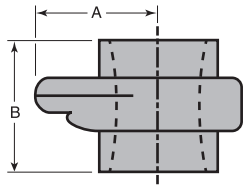


Figure 1003 Butt Weld Schedule 160 and XXH
Color Code: Green Subs/Black Nut

Nominal Pipe Size	3"	4"	5"
Qty. / Box	2	1	1
Part No.	U130340	U130440	U130540
Clearance Radius (A)	4.88"	5.75"	5.75"
End to End (B)	9.13"	10.94"	10.94"
Weight (lbs)	44.50	85.00	84.00
Material, Sub	4130 AS	4130 AS	4130 AS
Material, Nut	4140 AS	4140 AS	4140 AS

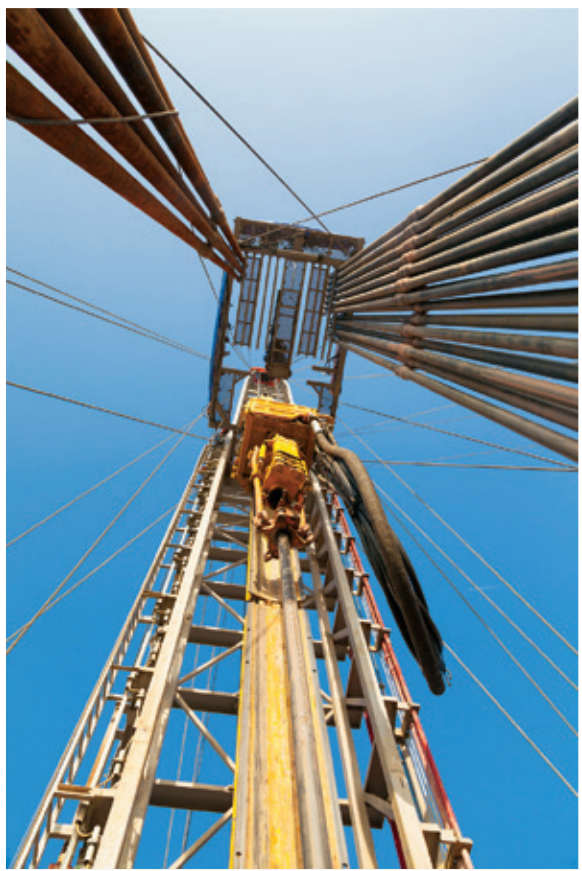
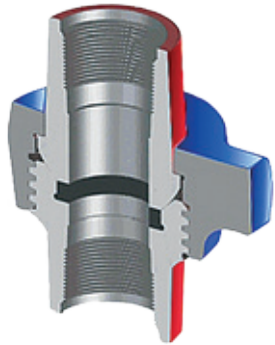


Figure 1502



C&C's Figure 1502 has a replaceable lip-type seal ring of Buna-N specifically designed to minimize fluid flow turbulence. The lip-type ring also provides a pressure seal and protection for the metal-to-metal seating surfaces. These unions are recommended for manifold and truck mounting or other installations where extreme high pressure is encountered. Recommended for air, water, oil, gas and mud service up to 15,000 PSI NSCWP.

Standard Service		H2S Service	
NSCWP	Test	NSCWP	Test
15,000 PSI	22,500 PSI	10,000 PSI	15,000 PSI

*All Working Pressures are Non-shock Cold Working Pressure Ratings (NSCWP)

Figure 1502 Threaded
Color Code: Red Subs/Blue Nut

Nominal Pipe Size	1"	1 1/2"	2"	3"	4"
Qty. / Box	9	5	5	4	1
Part No.	U150100	U151500	U150200	U150300	U150400
Clearance Radius (A)	3.00"	3.74"	3.74"	4.50"	6.00"
End to End Threaded (B)	4.375"	4.52"	7.05"	7.625"	8.50"
Weight (lbs)	9.11	19.20	20.00	34.67	76.00
Material, Sub	4130 AS	4130 AS	4130 AS	4130 AS	4130 AS
Material, Nut	4140 AS	4140 AS	4140 AS	4140 AS	4140 AS

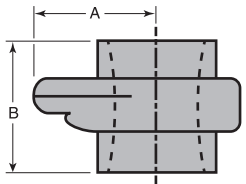


Figure 1502 Butt Weld
Color Code: Red Subs/Blue Nut

Nominal Pipe Size	2"	3"	4"	5"
Qty. / Box	5	4	1	1
Part No.	*	*	*	*
Clearance Radius (A)	3.74"	4.50"	6.00"	6.75"
End to End (B)	6.30"	5.25"	8.50"	9.00"
Weight (lbs)	20.00	30.00	84.00	96.00
Material, Sub	4130 AS	4130 AS	4130 AS	4130 AS
Material, Nut	4140 AS	4140 AS	4140 AS	4140 AS

Figure 1502 Butt Weld–NACE Unions
(Derated–10,000 PSI NSCWP)
Color Code: Silver Subs/Green Nut

Nominal Pipe Size	2"	3"
Qty. / Box	5	4
Part No.	U150240-SG	U150330SG
Clearance Radius (A)	3.74"	4.50"
End to End (B)	6.30"	5.25"
Weight (lbs)	20.00	30.00
Material, Sub	4130 AS	4130 AS
Material, Nut	4140 AS	4140 AS

Figure OCT



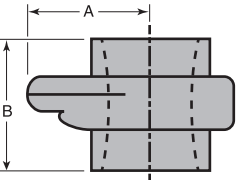
C&C's Figure OCT is manufactured from forged and normalized carbon steel to ASTM A105 with high speed ACME Threads. The Figure OCT is precision machined in dimensional compliance with MSS SP 83.

Standard Service		H2S Service	
NSCWP	Test	NSCWP	Test
3,000 PSI	4,000 PSI	3,000 PSI	4,000 PSI

*All Working Pressures are Non-shock Cold Working Pressure Ratings (NSCWP)

Figure OCT Threaded
Color Code: Silver Subs/Zinc Plated Nut

Nominal Pipe Size	1"	2"
Qty. / Box Part No.	40 U3000100	16 U3000200
Clearance Radius (A)	1.36"	2.19"
End to End Threaded (B)	2.50"	3.41"
Weight (lbs)	2.00	6.50
Material, Sub Material, Nut	A105 A105	A105 A105



Hammer Union Accessories

	Segments* Sizes: 1" – 3", Figure 1502 Comes ; in sets of 3 *When utilizing segments all segments must be of the same brand and must not be mixed with other brands otherwise connection problems may occur which may lead to possible injury or death.		O-Ring, Seal Ring and Metal-backed Seal Ring
	Female Flange Adapter Size: 4" FIG 200 FEMALE × 4" ANSI 125 FLANGE Qty. 1 Box Part No. U020402-FL125 Bolt Holes 6 Weight (lbs) 12 Size: 4" FIG 200 FEMALE × 4" ANSI 150 FLANGE Qty. 1 Box Part No. U020402-FLANGE Bolt Holes 8 Weight (lbs) 15		Snap Rings Sizes: 1" – 3", Figure 1502 4" – 5", Figure 1002
	Solid Male Sub Figures: 200, 206, 602, 1002, 1502 Sizes: 1" – 5" available with taps sizes and figures vary		Solid Female Sub Figures: 200, 206, 602, 1002, 1502 Sizes: 1" – 5" available with taps sizes and figures vary

PRODUCT WARNINGS

Failure to follow these Product Warnings can result in serious bodily injury or death.

Read these Product Warnings carefully.

C&C products should be used only by qualified, trained individuals experienced in the safe and proper handling of hammer unions and other couplings. Users must follow all applicable specifications and industry best practices for the safe installation and use of C&C products.

- Never exceed the recommended pressure rating or mix components or couplings with different pressure ratings. Mismatched hammer unions or other components or couplings can fail under pressure resulting in death, personal injury, or property damage.
- Never strike, tighten, or loosen pressurized components or connections.
- Never exceed the non-shock cold rated pressure (NSCWP) of the product. Complete and proper assembly of all components and connections is essential in order to attain the rated NSCWP.
- Never use and immediately replace any worn, eroded, or corroded components or connections.
- Never strike hammer unions that have deformed or flattened lugs.
- Never use C&C products in suspension applications.
- Never expose standard service components or couplings to sour gas fluids. Do not interchange sour gas components or couplings with standard service components or couplings.
- Always use extra care when working with carbon steel products in temperatures below 32°F/0°C. Freezing temperatures lower the impact strength of carbon steel.
- Always take all appropriate safety precautions and wear all appropriate protective equipment when assembling, disassembling, installing, or removing any C&C product.
- Always immediately remove from service any component or coupling from which leakage is detected.
- Carefully select the appropriate component or coupling for your intended use.

Worldwide Supplier of High-Quality Valves and Fittings



C&C Industries, Inc.

10350 Clay Road, Suite 250, Houston, Texas 77041

Toll Free: 877-996-9911

Phone: 713-466-1644 • Fax: 713-466-1715

www.candcvalve.com • sales@candcvalve.com



C&C INDUSTRIES, INC.®

